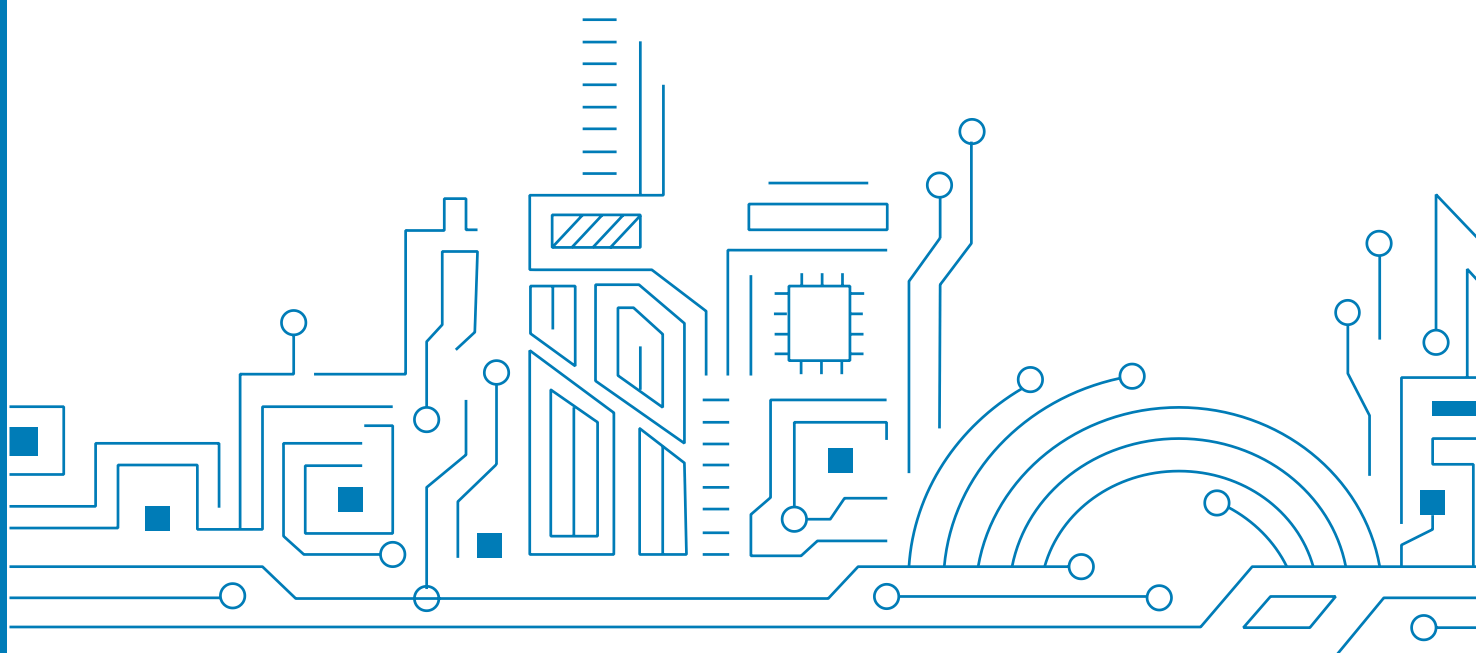


# Common Commands

## Exclusive to Allystar

V1.0



## REVISION HISTORY

Revision	Date	Author	Status / Comments
V1.0	2020.10	Vita Wu	First released.

## COMMON COMMANDS EXCLUSIVE TO ALLYSTAR

Type	Sub-type	Command	Remark
Command to save config	Save config	F1 D9 06 09 08 00 00 00 00 00 2F 00 00 00 46 B7	This command follows after a config command to save the config.
Enable/disable a NMEA message	GGA	F1 D9 06 01 03 00 F0 00 00 FA 0F    Disable F1 D9 06 01 03 00 F0 00 01 FB 10    Enable	
	GLL	F1 D9 06 01 03 00 F0 01 00 FB 11    Disable F1 D9 06 01 03 00 F0 01 01 FC 12    Enable	
	GSA	F1 D9 06 01 03 00 F0 02 00 FC 13    Disable F1 D9 06 01 03 00 F0 02 01 FD 14    Enable	
	GSV	F1 D9 06 01 03 00 F0 04 00 FE 17    Disable F1 D9 06 01 03 00 F0 04 01 FF 18    Enable	
	RMC	F1 D9 06 01 03 00 F0 05 00 FF 19    Disable F1 D9 06 01 03 00 F0 05 01 00 1A    Enable	
	VTG	F1 D9 06 01 03 00 F0 06 00 00 1B    Disable F1 D9 06 01 03 00 F0 06 01 01 1C    Enable	
	ZDA	F1 D9 06 01 03 00 F0 07 00 01 1D    Disable F1 D9 06 01 03 00 F0 07 01 02 1E    Enable	
	GST	F1 D9 06 01 03 00 F0 08 00 02 1F    Disable F1 D9 06 01 03 00 F0 08 01 03 20    Enable	
	GNTXT	F1 D9 06 01 03 00 F0 20 00 1A 4F    Disable F1 D9 06 01 03 00 F0 20 01 1B 50    Enable	
Config NMEA message output frequency	1Hz	F1 D9 06 42 14 00 00 01 38 35 E8 03 00 00 00 00 00 00 00 00 00 00 00 00 00 00 B5 6B	
	5Hz	F1 D9 06 42 14 00 00 05 38 00 C8 00 00 00 00 00 00 00 00 00 00 00 00 00 00 00 61 05	
	10Hz	F1 D9 06 42 14 00 00 0A 38 00 64 00 00 00 00 00 00 00 00 00 00 00 00 00 00 00 02 24	
Config navigation system	GPS	F1 D9 06 0C 04 00 01 00 00 00 17 A0	Applies to HD8020 series chips
	Beidou	F1 D9 06 0C 04 00 04 00 00 00 1A AC	
	GPS+Beidou	F1 D9 06 0C 04 00 05 00 00 00 1B B0	
Config startup mode	Cold start	F1 D9 06 40 01 00 01 48 22	
	Warm start	F1 D9 06 40 01 00 02 49 23	
	Hot start	F1 D9 06 40 01 00 03 4A 24	
	Reset	F1 D9 06 40 01 00 00 47 21	
	Factory reset	F1 D9 06 09 08 00 02 00 00 00 FF FF FF FF 15 01	

Sleep mode control	Sleep mode with low power consumption	F1 D9 06 41 05 00 FF FF FF 7F 03 CB 56	In this mode, the power consumption is low to <u>3.3V@8.4uA</u> . Pull down PRRSTX signal and then release it to wake up.
Version query command	Query the hardware and firmware version	F1 D9 0A 04 00 00 0E 34	
Config baud rate	Set to be 115200bps	F1 D9 06 00 08 00 00 00 00 00 C2 01 00 D1 E0	
	Set to be 9600 bps	F1 D9 06 00 08 00 00 00 00 00 80 25 00 00 B3 07	



[www.allystar.com](http://www.allystar.com)



[info.gnss@allystar.com](mailto:info.gnss@allystar.com)



5F, Building No.4, Winlead Intelligent Park, No.3, FaDa road (middle), Bantian Subdistrict, LongGang District, Shenzhen City, Guangdong Province, China.

